

Point-of-care Ultrasound Diagnosis of Emphysematous Cholecystitis

Fadwa Al Hammadi, MBBS*
Rasha Buhumaid, MBBS†

*Sheikh Khalifa Medical City, Department of Emergency Medicine, Abu Dhabi, United Arab Emirates

†Mohammed Bin Rashid University of Medicine and Health Sciences, Department of Emergency Medicine, Dubai, United Arab Emirates

Section Editor: Rick A. McPheeters, DO

Submission history: Submitted September 26, 2019; Revision received November 3, 2019; Accepted November 18, 2019

Electronically published January 23, 2020

Full text available through open access at http://escholarship.org/uc/uciem_cpem

DOI: 10.5811/cpcem.2019.11.45337

A 49-year-old male presented to the emergency department with abdominal pain and generalized weakness. The physical examination was positive for right upper quadrant tenderness and positive Murphy's sign. Point-of-care biliary ultrasound revealed signs of emphysematous cholecystitis. Emphysematous cholecystitis is a rare biliary pathology with a high mortality rate. It differs from acute cholecystitis in many ways. It has unique ultrasound characteristics. This case highlights the use of point-of-care ultrasound to diagnose a rare biliary condition. [Clin Pract Cases Emerg Med. 2020;4(1):107–108.]

CASE PRESENTATION

A 49-year-old man presented to the emergency department with epigastric abdominal pain. He was known to have multiple myeloma and was on chemotherapy; he also had a mass in the head of the pancreas, which required endoscopic retrograde cholangiopancreatography and stenting one month prior to this presentation. He was hypotensive and tachycardic. Abdominal exam revealed right upper quadrant tenderness and a positive Murphy's sign. Point-of-care biliary ultrasound revealed gallstones, pericholecystic fluid, and punctate hyperechoic foci in the lumen of the gallbladder (Video). Computed tomography revealed a distended gallbladder with intraluminal gas extending into the inferior surface of the liver (Image). The patient underwent percutaneous cholecystostomy. The bile culture grew the gram-negative bacterium *Prevotella buccae*.

DISCUSSION

Emphysematous cholecystitis (EC) is diagnosed by the presence of gas in the lumen or the wall of the gallbladder in the setting of acute cholecystitis. It is a rare biliary pathology with a high mortality rate.¹ EC differs from acute cholecystitis in many ways. It is more common in men and diabetics, and one third of the cases are not associated with cholelithiasis.² It is thought to be due to an ischemic event followed by an infection with gas-forming bacteria.

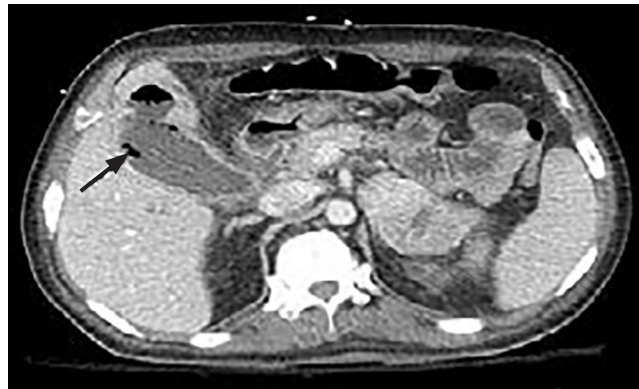


Image. Computerized tomography scan identified distended gallbladder with intraluminal gas (black arrow).

The causative organism identified in this case is rare. The most common bacteria associated with this condition are *Clostridium* species, *Escherichia coli*, *Klebsiella* species, and anaerobic streptococci.¹

The appearance of EC on ultrasound differs depending on the amount of gas in the gallbladder. A small amount of gas will produce echogenic foci with reverberation artifact known as ring-down artifact. However, a large amount of gas will produce a band with posterior dirty shadowing.³⁻⁴

Gas can also form multiple echogenic foci that move from the dependent to the independent area within the lumen of the gallbladder, also known as “effervescent gallbladder” or the “champagne” sign.⁴ Computed tomography is more sensitive and specific for the diagnosis of this condition.⁵ EC is a surgical emergency that is managed with intravenous antibiotics and cholecystectomy. Alternatively, percutaneous cholecystostomy is used in patients who are high risk for surgery.⁵

Video. Point-of-care biliary ultrasound identifying gallstones (white arrow), pericholecystic fluid (red arrow), and gas in the gallbladder lumen (green arrow).

Documented patient informed consent and/or Institutional Review Board approval has been obtained and filed for publication of this case report.

REFERENCES

1. Smith E, Dillman J, Elsayes K, et al. Cross-sectional imaging of acute and chronic gallbladder inflammatory disease. *Am J Roentgenol.* 2009;192(1):188-96.
2. Zippel D, Shapiro R, Goitein O, et al. Emphysematous cholecystitis: Don't be lulled into complacency. *J Emerg Med.* 2011;41(4):400-1.
3. Wexler B and Panebianco N. The effervescent gallbladder: an emergency medicine bedside ultrasound diagnosis of emphysematous cholecystitis. *Cureus.* 2017;9(7):e1520.
4. Safwan M and Penny S. Emphysematous cholecystitis. *J Diagn Med Sonogr.* 2016;32(3):131-7.
5. Huang H, Chuang C, Yang P. Abnormal gas in the gallbladder: emphysematous cholecystitis. *J Emerg Med.* 2013;45(2):254-5.

CPC-EM Capsule

What do we already know about this clinical entity?

Emergency physicians commonly perform biliary point-of-care ultrasound to identify gallstones and acute cholecystitis.

What is the major impact of the image(s)?

This case describes the use of point-of-care ultrasound to diagnose Emphysematous Cholecystitis (EC), highlighting the unique ultrasound characteristic of this condition.

How might this improve emergency medicine practice?

Using point-of-care ultrasound to diagnose EC (a rare condition with high mortality rate) could help accelerate the diagnosis and management.

Address for Correspondence: Rasha Buhumaid, MBBS, Mohammed Bin Rashid University of Medicine and Health Sciences, College of Medicine, Building 14, Dubai Healthcare City, PO Box 505055, Dubai, United Arab Emirates. Email: Rasha.buhumaid@mbru.ac.ae.

Conflicts of Interest: By the CPC-EM article submission agreement, all authors are required to disclose all affiliations, funding sources and financial or management relationships that could be perceived as potential sources of bias. The authors disclosed none.

Copyright: © 2020 Al Hammadi et al. This is an open access article distributed in accordance with the terms of the Creative Commons Attribution (CC BY 4.0) License. See: <http://creativecommons.org/licenses/by/4.0/>