

# SIMULATION

## Botulism due to Injection Drug Use

Timothy Hoffman, MD\* and Jennifer Yee, DO\*

\*The Ohio State University, Department of Emergency Medicine, Columbus, OH

Correspondence should be addressed to Jennifer Yee, DO at [Jennifer.Yee@osumc.edu](mailto:Jennifer.Yee@osumc.edu)

Submitted: October 6, 2022; Accepted: April 5, 2023; Electronically Published: April 30, 2023; <https://doi.org/10.21980/J8Q93B>

Copyright: © 2023 Hoffman, et al. This is an open access article distributed in accordance with the terms of the Creative Commons Attribution (CC BY 4.0) License.

See: <http://creativecommons.org/licenses/by/4.0/>

### ABSTRACT:

**Audience:** This scenario was developed to educate emergency medicine residents on the diagnosis and management of wound botulism secondary to injection drug use.

### Introduction:

Botulism is a relatively rare cause of respiratory failure and descending weakness in the United States, caused by prevention of presynaptic acetylcholine release at the neuromuscular junction. This presentation has several mimics, including myasthenia gravis and the Miller-Fisher variant of Guillain-Barré. It may be caused by ingestion of spores (infant), ingestion of pre-formed toxin (food-borne), formation of toxin *in vivo* (wound-associated cases), through weaponized sources, or through inappropriately administered injections (iatrogenic). Cases of black tar heroin injection have been associated with botulism. Regardless of the etiology, prompt assessment and support of respiratory muscle strength and ordering antidotal therapy is key to halting further muscle weakness progression.

**Educational Objectives:** At the conclusion of the simulation session, learners will be able to:

- 1) Identify the different etiologies of botulism, including wound, food-borne, infant, iatrogenic, and inhalational sources,
- 2) describe the pathophysiology of botulism toxicity and how it prevents presynaptic acetylcholine release at the neuromuscular junction,
- 3) develop a differential for bilateral descending muscle weakness,
- 4) compare and contrast presentations of myasthenia gravis, botulism, and the Miller-Fisher variant of Guillain-Barré syndrome,
- 5) describe measurement of neurologic respiratory parameter testing, such as negative inspiratory force,
- 6) outline treatment principles of wound-associated botulism, including antitoxin administration, wound debridement, tetanus vaccination, and evaluation for the need of antibiotics, and
- 7) identify appropriate disposition of the patient to the medical intensive care unit (ICU).

**Educational Methods:** This session was conducted using high-fidelity simulation, followed by a debriefing session and lecture on the diagnosis, differential diagnosis, and management of botulism secondary to injection drug use. Debriefing methods may be left to the discretion of participants, but the authors have utilized advocacy-inquiry techniques. This scenario may also be run as an oral board case.

# SIMULATION

**Research Methods:** Our residents are provided a survey at the completion of the debriefing session so they may rate different aspects of the simulation, as well as provide qualitative feedback on the scenario.

**Results:** Sixteen learners completed a feedback form. This session received all six and seven scores (consistently effective/very good and extremely effective/outstanding, respectively) other than three isolated five scores. The form also includes an area for general feedback about the case at the end. Illustrative examples of feedback include: “Really awesome debrief, breakdown of pathophysiology and clinical applications. Great work!”; “Great case with awesome learning points,” and “Loved this session. Rare case but very great learning.” Specific scores are available upon request.

**Discussion:** This is a cost-effective method for reviewing botulism diagnosis and management. The case may be modified for appropriate audiences, such as using classic illness scripting (eg, ingestion of canned foods). We encourage readers to utilize a standardized patient to demonstrate extraocular muscle weakness and bulbar symptoms to increase psychological buy-in.

**Topics:** Medical simulation, botulism, toxicologic emergencies, toxicology, neurology, emergency medicine.



# USER GUIDE

## List of Resources:

Abstract	62
User Guide	64
Instructor Materials	66
Operator Materials	79
Debriefing and Evaluation Pearls	81
Simulation Assessment	83

## Learner Audience:

Interns, Junior Residents, Senior Residents

## Time Required for Implementation:

**Instructor Preparation:** 30 minutes

**Time for case:** 20 minutes

**Time for debriefing:** 40 minutes

## Recommended Number of Learners per Instructor:

3-4

## Topics:

Medical simulation, botulism, toxicologic emergencies, toxicology, neurology, emergency medicine.

## Objectives:

By the end of this simulation session, learners will be able to:

1. Identify the different etiologies of botulism (wound, food-borne, infant, iatrogenic, inhalational)
2. Describe the pathophysiology of botulism toxicity
3. Develop a differential for bilateral descending muscle weakness
4. Compare and contrast presentations of myasthenia gravis, botulism, and the Miller-Fisher variant of Guillain-Barré syndrome
5. Describe measurement of neurologic respiratory parameter testing
6. Outline treatment principles of wound-associated botulism, including antitoxin administration, wound debridement, tetanus vaccination, and evaluation for the need of antibiotics
7. Identify appropriate disposition of the patient to the medical intensive care unit (MICU).

## Linked objectives and methods:

Patients with botulism require prompt recognition and treatment with antitoxin in order to slow progression to respiratory failure. After this scenario, providers will be able to describe the different causes of botulism toxicity (objective 1), the pathophysiology of botulism toxicity (objective 2) and compare and contrast different neuromuscular weakness

pathologies that may present similarly (objectives 3 and 4). Because a neuromuscular cause of descending weakness is suspected, neurologic respiratory parameters such as a negative inspiratory force and forced vital capacity should be obtained to assess the current trajectory of respiratory failure (objective 5). Once botulism is established as a potential cause of weakness, the process of ordering antitoxin should be arranged, as well as ancillary care such as wound debridement, tetanus vaccination, and assessing need for antibiotics (objective 6) before being admitted in the medical ICU for further respiratory monitoring and management (objective 7). Objectives were tracked by facilitators taking notes during the simulation scenario for the subsequent debriefing discussion.

This simulation scenario allows learners to reinforce botulism diagnostic and management skills in a psychologically-safe learning environment, and then receive formative feedback on their performance.

## Recommended pre-reading for instructor:

We recommend that instructors review literature regarding botulism, including presenting signs/symptoms, diagnosis, and management. Suggested readings include materials listed under the “References/suggestions for further reading” section below.

## Results and tips for successful implementation:

This simulation was written to be performed as a high-fidelity simulation scenario, but also may be used as a mock oral board case.

The case was written for emergency medicine residents within the setting of an emergency department (ED) with a stroke center designation; however, neurology will be unavailable for consultation if called.

Starting the case off with the nurse stating that the patient was a stroke alert allowed for residents to work through triage cueing and momentum bias. Depending on the experience of the learners, this may be left in or omitted at the facilitator’s discretion.

Botulism due to injection drug use was chosen due to the uncommon presentation of wound botulism. Ultimately, only one group out of nine voiced the diagnosis of botulism during the scenario, but no one ordered the antitoxin. About half of the groups voiced a possible differential diagnosis of myasthenia gravis. During debriefing, residents gave positive feedback regarding the review of neuromuscular disorders with comparing and contrasting their clinical presentations. Facilitators may choose to use a classic illness script such as eating homemade canned foods or an infant who became constipated and weak after being fed unpasteurized honey.



# USER GUIDE

Our scenario began with the patient demonstrating an earlier disease course with extraocular muscle and bulbar weakness rather than dyspnea, but then progressed to descending paralysis and early respiratory muscle weakness. We did not want to focus on respiratory failure in neuromuscular disease and how this may affect paralytic dosing; however, facilitators may elect to edit the case to emphasize these points.

We found that putting up a picture of ptosis and mydriasis emphasized that in the confederate's ptosis exam, but it was still difficult to appreciate mydriasis on the picture. Subsequently, we had the confederate patient state, "I don't know why my pupils are so large," when his eyes were examined.

One of our clinical respiratory therapists participated in the case and demonstrated how to obtain respiratory parameters (negative inspiratory force, vital capacity) when the learners requested these, which was well-received.

Our residents are provided a survey at the completion of the debriefing session so they may rate different aspects of the simulation, as well as provide qualitative feedback on the scenario. The local institution's simulation center's electronic feedback form is based on the Center of Medical Simulation's Debriefing Assessment for Simulation in Healthcare (DASH) Student Version Short Form<sup>1</sup> with the inclusion of required qualitative feedback if an element was scored less than a six or seven.

Sixteen learners completed a feedback form. This session received all six and seven scores (consistently effective/very good and extremely effective/outstanding, respectively) other than three isolated five scores. The lowest average score was tied at 6.63 for "Before the simulation, the instructor set the stage for an engaging learning experience," and "The instructor identified what I did well or poorly - and why." The highest average score was 6.94 for "The instructor provoked in-depth discussions that led me to reflect on my performance." The form also includes an area at the end for general feedback about the case. Illustrative examples of feedback include: "Really awesome debrief, breakdown of pathophysiology and clinical applications. Great work!"; "Great case with awesome learning points," and "Loved this session. Rare case but very great learning." Specific scores are available upon request.

## References:

1. Debriefing Assessment for Simulation in Healthcare (DASH). (n.d.). Retrieved from <https://harvardmedsim.org/debriefing-assessment-for-simulation-in-healthcare-dash/>

## Suggestions for further reading:

1. Botulism. Centers for Disease Control and Prevention. Last reviewed June 16, 2022. Accessed October 1<sup>st</sup>, 2022. At: <https://www.cdc.gov/botulism/health-professional.html>.
2. Rao AK, Sobel J, Chatham-Stephens K, Luquez C. Clinical guidelines for diagnosis and treatment of botulism, 2021. *MMWR Recomm Rep*. 2021;70(No. RR-2):1–30. DOI: <http://dx.doi.org/10.15585/mmwr.rr7002a1>
3. Mechem CC, Walter FG. Wound botulism. *Vet Hum Toxicol*. 1994 Jun;36(3):233-7. PMID: 8066973.
4. Varma JK, Katsitadze G, Moiscrafishvili M, et al. Signs and symptoms predictive of death in patients with foodborne botulism--Republic of Georgia, 1980-2002. *Clin Infect Dis*. 2004 Aug 1;39(3):357-62. Epub 2004 Jul 19. PMID: 15307002. doi: 10.1086/422318.
5. Middaugh N, Edwards L, Chatham-Stephens K, Arguello DF. Wound botulism among persons who inject black tar heroin in New Mexico, 2016. *Front Public Health*. 2021 Dec 16;9:744179. PMID: 34976915; PMCID: PMC8716579. At: doi: 10.3389/fpubh.2021.744179



# INSTRUCTOR MATERIALS

## Case Title: Botulism due to Injection Drug Use

**Case Description & Diagnosis (short synopsis):** Patient is a 37-year-old male who presents to triage by private vehicle with two hours of blurry vision. Upon further questioning in triage, he disclosed four days of difficulty speaking. Triage called a stroke alert and requested an immediate evaluation prior to going to the computed tomography (CT) scanner. If asked to go to CT before a neurologic physical exam has been performed, the CT scanner is currently busy with trauma patients.

Participants should request a point-of-care glucose and perform a full neurologic exam on the patient, which should reveal symmetric ptosis and slurred speech. Exposure of the patient's arms reveal bilateral track marks with surrounding erythema. When directly questioned, patient discloses injection drug use. At this point, participants should suspect other differentials such as myasthenia gravis or botulism. The patient will experience worsening bradycardia and develop dyspnea with delays in diagnosis or initiation of treatment; however, respiratory parameters should be reassuring against immediate need for intubation. Poison control or the health department should be contacted to obtain antivenom to treat for botulism. The patient should ultimately be dispositioned to the medical intensive care unit.

### Equipment or Props Needed:

- High fidelity simulation mannequin (authors used a SimMan® 3G Manikin) with lumbar puncture task trainer (eg: Kyoto Kagaku Lumbar Puncture Simulator IIa) and lumbar puncture kit kept under a bedsheet
- Angiocatheters for peripheral intravenous access = 18g, 20g, 22g
- Cardiac monitor
- Pulse oximetry
- IV pole
- Bilevel positive airway pressure (BiPAP) or continuous positive airway pressure (CPAP) mask
- Non-rebreather mask
- Nasal cannula
- Wound moulage to mock up drug injection skin tracts
- Long button-up shirt for the confederate patient to wear
- Normal saline (1 liter x2)
- Lactated Ringer's (1 liter x2)
- Simulated medications with labeling: cefepime, piperacillin-tazobactam, vancomycin



# INSTRUCTOR MATERIALS

## **Confederates needed:**

*One confederate as the primary nurse and one confederate as the patient. Faculty may call in overhead as the neurology, department of health, or poison control center provider*

## **Stimulus Inventory:**

- #1 Picture of a person's face with ptosis
- #2 Electrocardiogram, sinus bradycardia
- #3 Chest X-ray
- #4 Computed Tomography image, head
- #5 Complete blood count (CBC)
- #6 Basic metabolic panel (BMP)
- #7 Liver function panel (LFTs)
- #8 Magnesium
- #9 Thyroid stimulating hormone (TSH)
- #10 Lactate
- #11 Troponin
- #12 Arterial Blood Gas (ABG)
- #13 Ethanol level
- #14 Toxicology Screen
- #15 Urinalysis
- #16 Cerebrospinal Fluid (CSF) studies



# INSTRUCTOR MATERIALS

**Background and brief information:** Patient is a 37-year-old male who presents to your ED via triage for blurry vision for the past two hours. A stroke alert was called and you were asked to come assess him immediately.

**Initial presentation:** 37-year-old male lying supine on the cot, eyes half open, conversant

- Past medical history: injection heroin use (only disclosed if asked directly about illicit drug use)
- Past surgical history: none
- Medications: none
- Allergies: none
- Social hx: smokes cigarettes. Denies alcohol use. Injection heroin use (does not disclose this or marijuana use unless asked specifically about illicit drug use.)
- Family history: noncontributory
- Vital signs:
  - HR – 60 beats per minute
  - Resp rate – 12 respirations per minute
  - Temp – 99.8° F
  - BP – 116/86 mmHg
  - Pulse ox – 96% on room air
- Weight: 90 kg

Assessment: Lying supine, conversational

**How the scene unfolds:** Patient is a 37-year-old male who presents to triage by private vehicle with two hours of blurry vision. Upon further questioning in triage, he disclosed four days of difficulty speaking. Triage called a stroke alert and requested an immediate evaluation prior to going to the CT scanner. If asked to go to CT before a neurologic physical exam has been performed, the CT scanner is currently busy with trauma patients.

Patient's vitals are initially stable. Participants should request a point-of-care glucose and perform a full neurologic exam on the patient, played by a confederate actor, which should reveal symmetric ptosis and slurred speech. When the eyes specifically are examined, participants are shown a picture of a patient with ptosis and mydriasis. Exposure of the patient's arms reveal bilateral track marks with surrounding erythema. When directly questioned, patient discloses injection drug use. At this point, participants should suspect other differentials such as myasthenia gravis or botulism. The patient will experience



## INSTRUCTOR MATERIALS

worsening bradycardia and develop dyspnea with mild hypoxia with delays in diagnosis or initiation of treatment at minutes six and twelve; however, respiratory parameters should be reassuring against immediate need for intubation, and patient will still be able to speak in complete sentences without somnolence.

Participants may obtain a CT scan of the head or perform a lumbar puncture to evaluate for the albuminocytologic dissociation seen with myasthenia gravis; however, labs and imaging will be largely unrevealing. Neurology will be initially unavailable for consultation, but if called after CT head is interpreted, they will remark that the patient does not sound like a tissue plasminogen activator (tPA) candidate and leave the conversation abruptly. Poison control or the health department should be contacted to obtain antivenom to treat for botulism. The patient should ultimately be dispositioned to the medical intensive care unit.

### **Critical actions:**

1. Obtain an early (within first 2 minutes) point-of-care glucose
2. Perform a full neurologic exam, including reflexes
3. Fully expose patient to reveal antecubital track marks
4. Contact poison control or the health department to order antitoxin
5. Order neurologic respiratory parameters
6. Admit to the medical ICU



# INSTRUCTOR MATERIALS

**Case Title:** Botulism due to Injection Drug Use

**Chief Complaint:** Blurry vision

**Vitals:** Heart Rate (HR) 60      Blood Pressure (BP) 116/86  
Respiratory Rate (RR) 12      Temperature (T) 99.8°F  
Oxygen Saturation (O<sub>2</sub>Sat) 96% on room air

**General Appearance:** Lying supine on the cot, conversational.

## Primary Survey:

- **Airway:** patent
- **Breathing:** clear to auscultation bilaterally
- **Circulation:** heart regular rate and rhythm, 2+ symmetric pulses, capillary refill >3 seconds

## History:

- **History of present illness:** Patient reports four days of trouble speaking and two hours of blurry vision. Denies headache, unilateral weakness or paresthesias, upper respiratory complaints, chest pain, dyspnea, cough, vomiting, diarrhea, dysuria, urinary frequency, rash, or myalgias.
  - If asked:
    - Last tetanus immunization is unknown
    - Denies recent falls
    - No history of seizures
- **Past medical history:** injection heroin use and marijuana use (does not disclose unless asked specifically about illicit drug use)
- **Past surgical history:** none
- **Medications:** none
- **Allergies:** none
- **Social history:** smokes cigarettes. Denies alcohol use. Injection heroin use (does not disclose unless asked specifically about illicit drug use)
- **Family history:** noncontributory

## Secondary Survey/Physical Examination:



# INSTRUCTOR MATERIALS

- **Vital signs:**
  - HR – 60
  - RR – 12
  - Temp – 99.8°F
  - BP – 116/86 right upper extremity
  - Pulse ox – 98% room air
  - Weight: 90 kg
- **General appearance:** lying supine on cot, appears stated age
- **HEENT:**
  - **Head:** atraumatic
  - **Eyes:** bilateral ptosis (picture of ptosis/fixed mydriasis is shown when team specifically examines the patient's eyes)
  - **Ears:** within normal limits (wnl)
  - **Nose:** wnl
  - **Throat:** wnl
- **Neck:** wnl
- **Heart:** regular rhythm and rate. Otherwise within normal limits
- **Lungs:** wnl
- **Abdominal/GI:** wnl
- **Genitourinary:** deferred/within normal limits
- **Rectal:** deferred/within normal limits
- **Extremities:** bilateral track marks with surrounding erythema seen in antecubital fossa. Otherwise within normal limits
- **Neuro:** bilateral ptosis, fixed mydriasis, slurred speech. Otherwise within normal limits
- **Skin:** bilateral track marks with surrounding erythema seen in antecubital fossa. Otherwise within normal limits
- **Lymph:** wnl
- **Psych:** wnl



## INSTRUCTOR MATERIALS

*Picture of a person's face with ptosis*

Fred HL, van Dijk HA. Botulism 1 and 2. In: Wikimedia Commons.

<https://commons.wikimedia.org/wiki/File:Botulism1and 2.JPG>. Public domain.



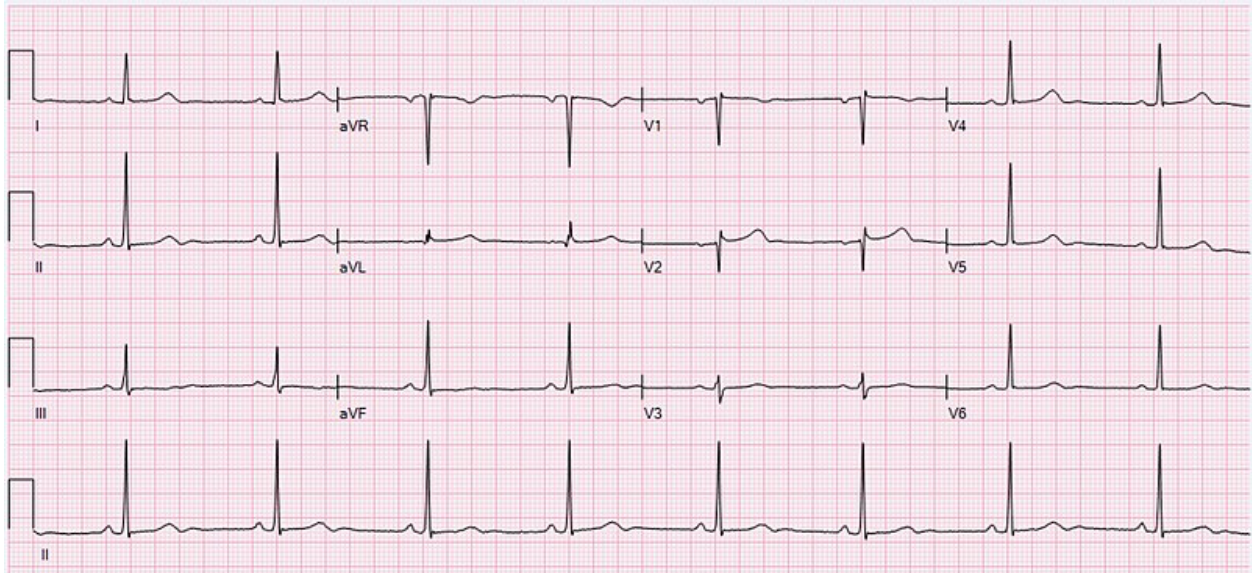


# INSTRUCTOR MATERIALS

*Electrocardiogram, sinus bradycardia*

Ewingdo. ECG Sinus Bradycardia 49 bpm. In: Wikimedia Commons.

[https://commons.wikimedia.org/wiki/File:ECG\\_Sinus\\_Bradycardia\\_49\\_bpm.jpg](https://commons.wikimedia.org/wiki/File:ECG_Sinus_Bradycardia_49_bpm.jpg). Public domain.

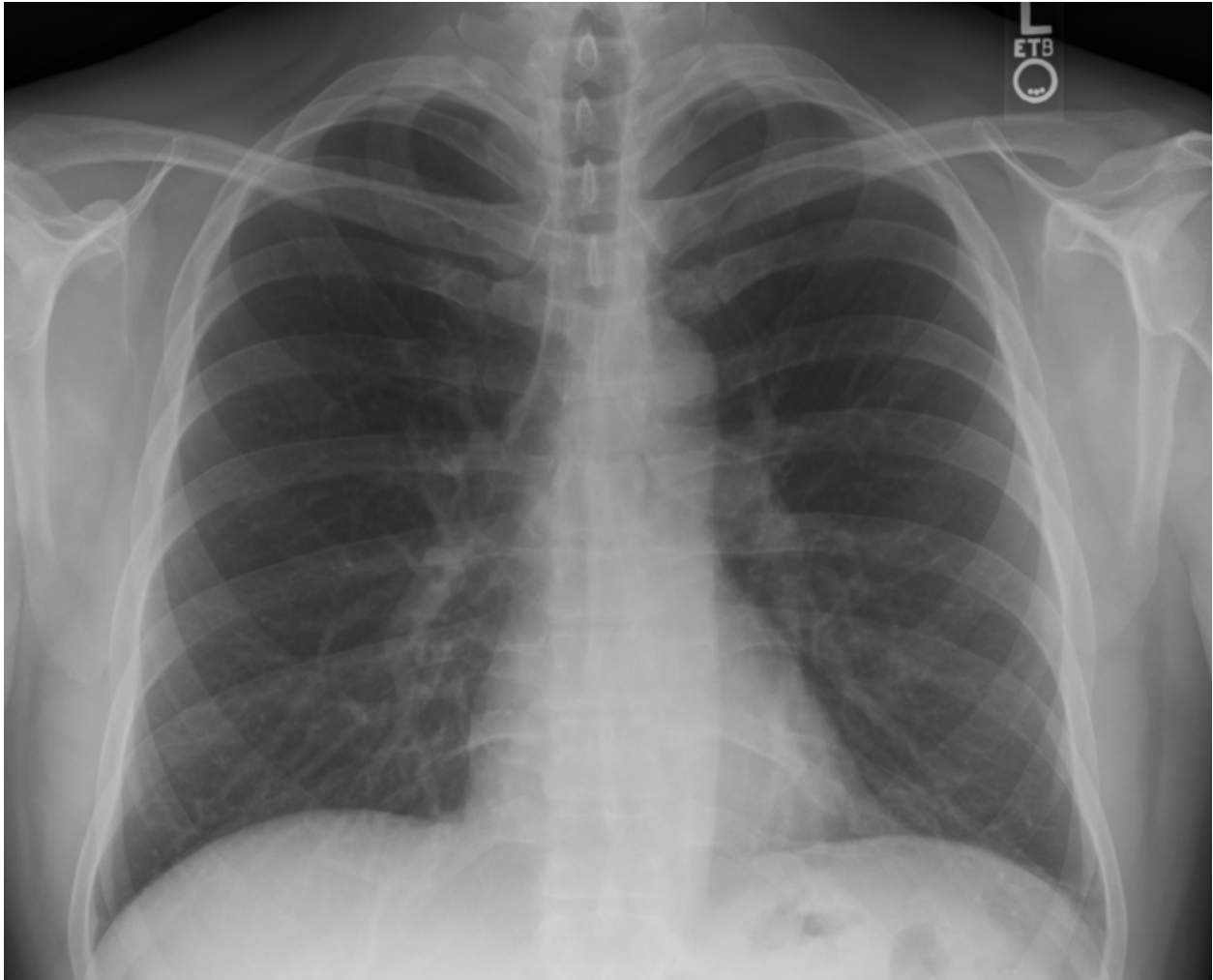




## INSTRUCTOR MATERIALS

### *Chest X-ray*

Stillwaterising. Chest Xray PA 3-8-2010. In: Wikimedia Commons. File:Chest Xray PA 3-8-2010.png - Wikimedia Commons. Public domain.





## INSTRUCTOR MATERIALS

*Computed Tomography image, head*

Ciscel A. Head CT scan. In: Wikimedia Commons.

[https://commons.wikimedia.org/wiki/File:Head\\_CT\\_scan.jpg](https://commons.wikimedia.org/wiki/File:Head_CT_scan.jpg). Public domain.





## INSTRUCTOR MATERIALS

### *Complete blood count (CBC)*

White blood count (WBC)	13.8 x 1000/mm <sup>3</sup>
Hemoglobin (Hgb)	13.8 g/dL
Hematocrit (HCT)	28.4%
Platelet (Plt)	450 x 1000/mm <sup>3</sup>
Bands	17%

### *Basic metabolic panel (BMP)*

Sodium	143 mEq/L
Potassium	4.1 mEq/L
Chloride	98 mEq/L
Bicarbonate (HCO <sub>3</sub> )	24 mEq/L
Blood Urea Nitrogen (BUN)	35 mg/dL
Creatinine (Cr)	1.0 mg/dL
Glucose	88 mg/dL
Calcium	8.1 mg/dL

### *Liver function test (LFTs)*

Total bilirubin	0.7 mg/dL
Direct bilirubin	0.3 mg/dL
Alkaline phosphatase	97 units/L
Aspartate aminotransferase (AST)	31 units/L
Alanine aminotransferase (ALT)	42 units/L
Albumin	2.7 g/dL

*Magnesium* 1.9 mEq/L

*Thyroid stimulating hormone (TSH)* 3.64 uIU/mL (0.550-4.780 uIU/mL)

*Lactate* 1.5 mmol/L (<1.0 mmol/L)

*Troponin* <0.015 ml/mL



# INSTRUCTOR MATERIALS

## *Arterial Blood Gas (ABG)*

pH	7.31
pCO <sub>2</sub>	50 mmHg
pO <sub>2</sub>	86 mmHg
HCO <sub>3</sub>	23 mEq/L
O <sub>2</sub> Saturation	96% on room air

*Ethanol level* <0.01 mg/dL

## *Toxicology Screen*

Amphetamines	Negative
Barbiturates	Negative
Benzodiazepines	Negative
Cocaine	Negative
Methadone	Negative
Opiates	Positive
Oxycodone	Negative
PCP	Negative
THC	Positive

## *Urinalysis*

Leukocyte esterase	Negative
Nitrites	Negative
Blood	None
Protein	None
Ketones	1+
Glucose	None
Color	Dark Yellow
White blood cells	0-5 WBCs/HPF
Red blood cells	0-5 RBCs/HPF
Squamous epithelial cells	5-10 cells/HPF
Specific gravity	1.015



# INSTRUCTOR MATERIALS

## *Cerebrospinal Fluid (CSF) studies*

Appearance	Clear
Glucose	60 mg/dL
Protein	40 mg/dL
White blood cells	0-5 RBCs/uL
Red blood cells	0-3 WBCs/uL
Gram stain	No organisms seen



# OPERATOR MATERIALS

## SIMULATION EVENTS TABLE:

Minute (state)	Participant action/ trigger	Patient status (simulator response) & operator prompts	Monitor display (vital signs)
0:00 (Baseline)	SP nurse brings the team into the patient's room in the emergency department.	<p>Participants should begin by placing the patient on a monitor, obtaining history from patient, obtaining a point-of-care glucose, and performing a physical exam.</p> <p>If asked to go to CT before a neurologic physical exam has been performed, the CT scanner is currently busy with trauma patients.</p>	<p>A: T 99.8°F HR 60 BP 116/86 RR 12 O<sub>2</sub> sat 96% room air (RA)</p>
6:00	<p>Team should recognize the bilateral ptosis, mydriasis, and dysarthria.</p> <p>IV placed, labs obtained.</p> <p>Labs, EKG should be ordered.</p>	<p>CT will be available to the learners once a neurologic exam has been performed.</p> <p>If the team recognizes botulism and orders antitoxin by minute 6, vitals remain unchanged from vitals (B).</p> <p>If the team does not order the antitoxin by minute 6, bradycardia worsens and patient develops dyspnea/hypoxia (C). The patient can also say, "Hey, I can't shrug my shoulders," and give a weak/minimal shrug to demonstrate descending muscle weakness.</p> <p>If team doesn't order a CT scan, nursing will remind them that a stroke alert was called and ask them if they still want to go to the CT scanner.</p> <p>If neurology is called before CT head is interpreted by the team, the nurse will tell the participants that the neurologist is busy and therefore unavailable for consultation at this time.</p> <p>If neurology is called after CT head is interpreted by the team, neurology will remark that the patient does not sound like a tPA candidate and leave the conversation abruptly</p>	<p>B: T 99.8°F HR 48 BP 116/86 RR 12 O<sub>2</sub> sat 94% RA</p>



# OPERATOR MATERIALS

Minute (state)	Participant action/ trigger	Patient status (simulator response) & operator prompts	Monitor display (vital signs)
8:00 (Case Completion)	<p>Team should recognize worsening dyspnea and hypoxia.</p> <p>Should order neurologic respiratory parameters and order the antitoxin</p>	<p>If team orders respiratory parameters and antitoxin, vitals remain unchanged (C).</p> <p>If respiratory parameters are not ordered by minute 12, patient becomes more dyspneic with shallow breathing (D).</p> <p>If antidote is not ordered by minute 12, vitals worsen more markedly (E).</p> <p>Case ends after antidote is ordered, respiratory parameters obtained, and the MICU is contacted for admission (or minute 15/facilitator’s discretion).</p> <p>If the team does not ask to call for admission, the nurse should prompt, “We need this bed; triage is full. What are we doing for dispo?”</p>	<p>C: T 99.8°F HR 40 BP 116/86 RR 12 O<sub>2</sub> sat 88% RA O<sub>2</sub> sat 92% on NRB or nasal cannula oxygen</p> <p>D: T 99.8°F HR 38 BP 116/86 RR 26 O<sub>2</sub> sat 85% RA O<sub>2</sub> sat 88% on NRB or nasal cannula oxygen</p> <p>E: T 99.8°F HR 35 BP 116/86 RR 30 O<sub>2</sub> sat 85% RA O<sub>2</sub> sat 88% on NRB or nasal cannula oxygen</p>

## Diagnosis:

Botulism due to Injection Drug Use

## Disposition:

MICU



# DEBRIEFING AND EVALUATION PEARLS

## Botulism

### Categories of botulism<sup>2</sup>

- Infant botulism: *C. botulinum*. after the **ingestion of clostridial spores** that then colonize the host's gastrointestinal (GI) tract and release toxin produced in vivo
  - honey if given to an infant <12 months of age because they do not possess colonization of intestinal flora yet
    - muscle weakness may be preceded with constipation
    - treatment: BabyBIG (California Department of Health)
  - Adult enteric infectious botulism is rare
- Food-borne botulism - after **ingestion of preformed botulinum toxin** (contaminated food)
  - canned goods
  - could also be from intentional placement in food
- Wound botulism. *C. botulinum* produces toxin *in vivo*
  - results from deep/contaminated wound
  - toxin gets absorbed into the bloodstream
  - soldiers, open wounds, injection drug use (often subcutaneous or intradermal)
- rare: iatrogenic
- rare: inhalational botulism from inhaling aerosolized toxin

Botulism toxin is the most potent bacterial toxin known<sup>2</sup>. The toxin binds presynaptic voluntary motor and autonomic neuromuscular junction cells and prevents presynaptic release of acetylcholine and subsequent postsynaptic membrane depolarization.

### CDC's key features:

- absence of fever
- (descending) symmetric neurologic deficits, usually bilateral
  - Blurry vision: from fixed mydriasis and CN III, IV, VI palsies
  - Bulbar weakness
- remains responsive
- bradycardic/normal heart rate and normal blood pressure
- lack of sensory deficits

Shortness of breath alone identified patients at increased mortality risk<sup>4</sup>

- Anticholinergic mydriasis, decreased salivation, urinary retention



## DEBRIEFING AND EVALUATION PEARLS

- GI symptoms are not seen with wound botulism<sup>3</sup>

Differential Diagnoses include<sup>1</sup>:

- Myasthenia gravis: increasing fatigue with muscle use. However, pupillary function will be normal.
- Miller-Fisher variant of Guillain-Barré syndrome: ophthalmoplegia, ataxia, areflexia. May develop fixed mydriasis.

Treatment

- Assess for need for respiratory support, mechanical ventilation<sup>1</sup>
- Respiratory parameters that suggest weakening respiratory function (repeat each parameter several times to obtain an average):
  - forced vital capacity (FVC) <20 mL/kg,
  - maximum inspiratory pressure (ie, negative inspiratory force) <30 cm H<sub>2</sub>O,
    - after exhaling slowly as much as possible, patients should breathe in as hard as possible, maintaining this for at least a second and a half
  - maximum expiratory pressure <40 cm H<sub>2</sub>O
- after taking as deep a breath in as possible, patients should exhale as hard as possible, maintaining this for at least a second and a half
- Antitoxin only prevents weakness progression; it does not reverse pre-existing weakness<sup>1</sup>
  - contact the state health department immediately for assistance to obtain a supply of antitoxin
- Wound associated forms of botulism: debride the wound, treat superimposed bacterial infections with antibiotics<sup>1</sup>, tetanus vaccination

**Closed loop communication and team interaction**

- Pointed roles during a critical event are extremely important in providing maximal care
- Address team members by their roles or names when asking for an action and request a verbal confirmation that you were heard and understood



# SIMULATION ASSESSMENT

## Case: Botulism due to Injection Drug Use

Learner: \_\_\_\_\_

### **Assessment Timeline**

This timeline is to help observers assess their learners. It allows observer to make notes on when learners performed various tasks, which can help guide debriefing discussion.

#### **Critical Actions:**

1. Obtain an early (within first 2 minutes) point-of-care glucose
2. Perform a full neurologic exam, including reflexes
3. Fully expose patient to reveal antecubital track marks
4. Contact poison control or the health department to order antitoxin
5. Order neurologic respiratory parameters
6. Admit to the medical ICU

0:00



# SIMULATION ASSESSMENT

## *Case: Botulism due to Injection Drug Use*

Learner: \_\_\_\_\_

### **Critical Actions:**

- Obtain an early (within first 2 minutes) point-of-care glucose
- Perform a full neurologic exam, including reflexes
- Fully expose patient to reveal antecubital track marks
- Contact poison control or the health department to order antitoxin
- Order neurologic respiratory parameters
- Admit to the medical ICU

### **Summative and formative comments:**



# SIMULATION ASSESSMENT

## Case: Botulism due to Injection Drug Use

Learner: \_\_\_\_\_

### Milestones assessment:

	Milestone	Did not achieve level 1	Level 1	Level 2	Level 3
1	<b>Emergency Stabilization (PC1)</b>	<input type="checkbox"/> Did not achieve Level 1	<input type="checkbox"/> Recognizes abnormal vital signs	<input type="checkbox"/> Recognizes an unstable patient, requiring intervention  Performs primary assessment  Discerns data to formulate a diagnostic impression/plan	<input type="checkbox"/> Manages and prioritizes critical actions in a critically ill patient  Reassesses after implementing a stabilizing intervention
2	<b>Performance of focused history and physical (PC2)</b>	<input type="checkbox"/> Did not achieve Level 1	<input type="checkbox"/> Performs a reliable, comprehensive history and physical exam	<input type="checkbox"/> Performs and communicates a focused history and physical exam based on chief complaint and urgent issues	<input type="checkbox"/> Prioritizes essential components of history and physical exam given dynamic circumstances
3	<b>Diagnostic studies (PC3)</b>	<input type="checkbox"/> Did not achieve Level 1	<input type="checkbox"/> Determines the necessity of diagnostic studies	<input type="checkbox"/> Orders appropriate diagnostic studies.  Performs appropriate bedside diagnostic studies/procedures	<input type="checkbox"/> Prioritizes essential testing  Interprets results of diagnostic studies  Reviews risks, benefits, contraindications, and alternatives to a diagnostic study or procedure
4	<b>Diagnosis (PC4)</b>	<input type="checkbox"/> Did not achieve Level 1	<input type="checkbox"/> Considers a list of potential diagnoses	<input type="checkbox"/> Considers an appropriate list of potential diagnosis  May or may not make correct diagnosis	<input type="checkbox"/> Makes the appropriate diagnosis  Considers other potential diagnoses, avoiding premature closure



# SIMULATION ASSESSMENT

## Case: Botulism due to Injection Drug Use

Learner: \_\_\_\_\_

	Milestone	Did not achieve level 1	Level 1	Level 2	Level 3
5	<b>Pharmacotherapy (PC5)</b>	<input type="checkbox"/> Did not achieve Level 1	<input type="checkbox"/> Asks patient for drug allergies	<input type="checkbox"/> Selects an medication for therapeutic intervention, consider potential adverse effects	<input type="checkbox"/> Selects the most appropriate medication and understands mechanism of action, effect, and potential side effects  Considers and recognizes drug-drug interactions
6	<b>Observation and reassessment (PC6)</b>	<input type="checkbox"/> Did not achieve Level 1	<input type="checkbox"/> Reevaluates patient at least one time during case	<input type="checkbox"/> Reevaluates patient after most therapeutic interventions	<input type="checkbox"/> Consistently evaluates the effectiveness of therapies at appropriate intervals
7	<b>Disposition (PC7)</b>	<input type="checkbox"/> Did not achieve Level 1	<input type="checkbox"/> Appropriately selects whether to admit or discharge the patient	<input type="checkbox"/> Appropriately selects whether to admit or discharge  Involves the expertise of some of the appropriate specialists	<input type="checkbox"/> Educates the patient appropriately about their disposition  Assigns patient to an appropriate level of care (ICU/Tele/Floor)  Involves expertise of all appropriate specialists
9	<b>General Approach to Procedures (PC9)</b>	<input type="checkbox"/> Did not achieve Level 1	<input type="checkbox"/> Identifies pertinent anatomy and physiology for a procedure  Uses appropriate Universal Precautions	<input type="checkbox"/> Obtains informed consent  Knows indications, contraindications, anatomic landmarks, equipment, anesthetic and procedural technique, and potential complications for common ED procedures	<input type="checkbox"/> Determines a back-up strategy if initial attempts are unsuccessful  Correctly interprets results of diagnostic procedure



# SIMULATION ASSESSMENT

## Case: Botulism due to Injection Drug Use

Learner: \_\_\_\_\_

	Milestone	Did not achieve level 1	Level 1	Level 2	Level 3
20	<b>Professional Values (PROF1)</b>	<input type="checkbox"/> Did not achieve Level 1	<input type="checkbox"/> Demonstrates caring, honest behavior	<input type="checkbox"/> Exhibits compassion, respect, sensitivity and responsiveness	<input type="checkbox"/> Develops alternative care plans when patients' personal beliefs and decisions preclude standard care
22	<b>Patient centered communication (ICS1)</b>	<input type="checkbox"/> Did not achieve level 1	<input type="checkbox"/> Establishes rapport and demonstrates empathy to patient (and family) Listens effectively	<input type="checkbox"/> Elicits patient's reason for seeking health care	<input type="checkbox"/> Manages patient expectations in a manner that minimizes potential for stress, conflict, and misunderstanding.  Effectively communicates with vulnerable populations, (at risk patients and families)
23	<b>Team management (ICS2)</b>	<input type="checkbox"/> Did not achieve level 1	<input type="checkbox"/> Recognizes other members of the patient care team during case (nurse, techs)	<input type="checkbox"/> Communicates pertinent information to other healthcare colleagues	<input type="checkbox"/> Communicates a clear, succinct, and appropriate handoff with specialists and other colleagues  Communicates effectively with ancillary staff