

Western Journal of Emergency Medicine:

Integrating Emergency Care with Population Health

This open access publication would not be possible without the generous and continual support of our society, chapter, and department sponsors.

Professional Society Sponsors

AMERICAN COLLEGE OF OSTEOPATHIC EMERGENCY PHYSICIANS

CALIFORNIA CHAPTER OF THE
AMERICAN ACADEMY OF EMERGENCY MEDICINE

CALIFORNIA CHAPTER OF THE
AMERICAN COLLEGE OF EMERGENCY PHYSICIANS

Academic Department Sponsors

ADVOCATE CHRIST MEDICAL
CENTER
OAK LAWN, IL

AMERICAN UNIVERSITY OF
BEIRUT
BEIRUT, LEBANON

BAYLOR COLLEGE OF MEDICINE
HOUSTON, TX

BAYSTATE MEDICAL CENTER/
TUFTS UNIVERSITY
SPRINGFIELD, MA

BOSTON MEDICAL CENTER
BOSTON, MA

BROWN UNIVERSITY
PROVIDENCE, RI

CARL R. DARNALL MEDICAL
CENTER
FORT HOOD, TX

EASTERN VIRGINIA MEDICAL
SCHOOL
NORFOLK, VA

EMORY UNIVERSITY
ATLANTA, GA

FLORIDA HOSPITAL MEDICAL
CENTER
ORLANDO, FL

GOOD SAMARITAN HOSPITAL
MEDICAL CENTER
WEST ISLIP, NY

HENRY FORD MEDICAL CENTER
DETROIT, MI

INTEGRIS HEALTH
OKLAHOMA CITY, OK

KAWEAH DELTA HEALTHCARE
DISTRICT
VISALIA, CA

KENNEDY UNIVERSITY HOSPITALS*
TURNERSVILLE, NJ

KERN MEDICAL CENTER
BAKERSFIELD, CA

LAKELAND HEALTHCARE
ST. JOSEPH, MICHIGAN

LEHIGH VALLEY HOSPITAL AND
HEALTH NETWORK

ALLENTOWN, PA

MADIGAN ARMY MEDICAL
CENTER
TACOMA, WA

MAIMONIDES MEDICAL CENTER*
BROOKLYN, NY

MARICOPA MEDICAL CENTER
PHOENIX, AZ

MASSACHUSETTS GENERAL
HOSPITAL

BOSTON, MA

NORTH SHORE UNIVERSITY HOSPITAL
MANHASSET, NY

OKLAHOMA UNIVERSITY
NORMAN, OK

REGIONS HOSPITAL/ HEALTH PARTNERS
INSTITUTE FOR EDUCATION AND
RESEARCH

ST. PAUL, MN

RESURRECTION MEDICAL CENTER*
CHICAGO, IL

ROBERT WOOD JOHNSON HOSPITAL*
NEW BRUNSWICK, NJ

SOUTHERN ILLINOIS UNIVERSITY
CARBONDALE, IL

STANFORD UNIVERSITY
PALO ALTO, CA

SUNY DOWNSTATE MEDICAL CENTER
NEW YORK CITY, NY

TEMPLE UNIVERSITY
PHILADELPHIA, PA

UNIVERSITY OF ARIZONA
TUCSON, AZ

UNIVERSITY OF CALIFORNIA DAVIS*
DAVIS, CA

UNIVERSITY OF CALIFORNIA IRVINE*
ORANGE, CA

UNIVERSITY OF CALIFORNIA SAN
DIEGO

LA JOLLA, CA

UNIVERSITY OF CALIFORNIA SAN
FRANCISCO
SAN FRANCISCO, CA

UNIVERSITY OF CALIFORNIA SAN
FRANCISCO FRESNO
FRESNO, CA

UNIVERSITY OF FLORIDA
JACKSONVILLE, FL

UNIVERSITY OF ILLINOIS AT CHICAGO
CHICAGO, IL

UNIVERSITY OF LOUISVILLE
LOUISVILLE, KY

UNIVERSITY OF MARYLAND
COLLEGE PARK, MD

UNIVERSITY OF NEVADA
LAS VEGAS, NV

UNIVERSITY OF SOUTHERN
CALIFORNIA/KECK SCHOOL OF
MEDICINE
LOS ANGELES, CA

UNIVERSITY OF TEXAS, HOUSTON
HOUSTON, TX

UNIVERSITY OF UTAH
SALT LAKE CITY, UT

UPSTATE MEDICAL CENTER
SYRACUSE, NY

**denotes department & residency sponsor*

Professional Chapter Sponsor

FLORIDA CHAPTER OF THE
AMERICAN ACADEMY OF EMERGENCY MEDICINE

NEVADA CHAPTER OF THE
AMERICAN ACADEMY OF EMERGENCY MEDICINE

MISSOURI CHAPTER OF THE
AMERICAN ACADEMY OF EMERGENCY MEDICINE

TENNESSEE CHAPTER OF THE
AMERICAN ACADEMY OF EMERGENCY MEDICINE

UNIFORMED SERVICES CHAPTER OF THE
AMERICAN ACADEMY OF EMERGENCY MEDICINE

VIRGINIA CHAPTER OF THE
AMERICAN ACADEMY OF EMERGENCY MEDICINE

International Society Partners

SOCIEDAD ARGENTINA DE EMERGENCIAS

SOCIEDAD CHILENO MEDICINA URGENCIA

THAI ASSOCIATION FOR EMERGENCY MEDICINE

EMERGENCY MEDICINE ASSOCIATION OF TURKEY

Become a *WestJEM* departmental sponsor, waive article processing fees, receive print/electronic copies, and free CME advertisement space at www.calaaem.org/westjem/request-a-subscription or contact:

Emily DeVillers
Cal/AAEM: WestJEM
Phone: (800) 884-2236
EDeVillers@aaem.org

or

Shahram Lotfipour, MD, MHPE
Managing Associate Editor
Phone: (714) 456-2326
Shahram.Lotfipour@uci.edu



The ACOEP Advantage

Specialized. Personalized.

For over 35 years, the ACOEP Advantage has provided emergency physicians with educational opportunities, career advancement, and the tools to achieve their goals. ACOEP's comparatively smaller size is a large part of what makes membership more valuable!

ACOEP members and conference attendees enjoy:

- Greater access to ACOEP leadership and decision-makers
- More opportunities to participate in leadership roles at a national level
- National conferences tailored to the specific needs of our members
- More face time with recruiters, industry leaders, and political advocates

Join us and see for yourself what the ACOEP Advantage is all about!

Mark your calendars for these conferences:

The Edge: Intense Review 2015
The Edge: Oral Board Review 2015

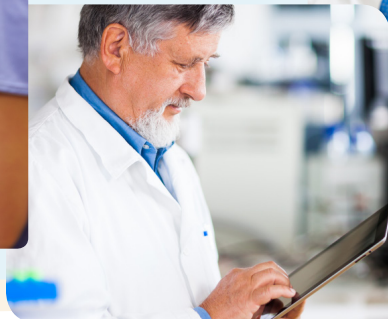
January 13-19, 2015
Westin River North
Chicago, IL

The Edge: Spring Seminar 2015

April 7-11, 2015
Marriott Harbor Beach
Ft. Lauderdale, FL

The Edge: Scientific Assembly 2015

October 18-21, 2015
Loews Portofino Bay
Universal, Orlando, FL





Open Access at www.WestJEM.com & www.WestJEM.org

Western Journal of Emergency Medicine
Integrating Emergency Care with Population Health

FOLLOW US ON



@WestJEM



Western Journal of
Emergency Medicine

www.westjem.com



A Peer-Reviewed, International Professional Journal

WestJEM

Integrating Emergency Care with Population Health

WestJEM is proud to announce the launch of our **free** electronic Academic Job Board posted on our website:

www.WestJEM.com

Please click on the Job Board tab to see a sample of posted advertisements.

Please send your 300 dpi PDF advertisement with the duration of job posting/end date and link to contact person in your advertisement to jobboard@westjem.org
(Limit one posting per PDF)

We look forward to serving the academic community with this free and vital service.



38TH ANNUAL EMERGENCY MEDICINE IN YOSEMITE

January 14 – 17, 2015

Register online:
www.yosemitemef.org

Sponsored by Yosemite Medical Education Foundation (YMEF)
Co-Sponsored by CaliforniaACEP

5th Annual *National Update on Behavioral Emergencies*

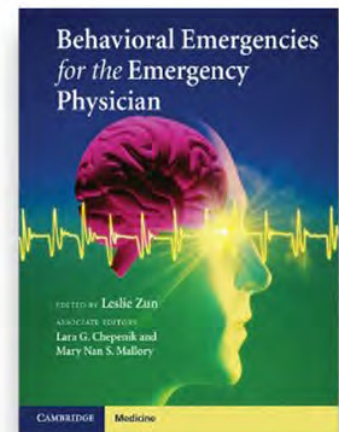
Tentative Agenda (Day 1- Thursday Dec 11)

Working with Law Enforcement
What is New in Medical Clearance
Suicide and Substance Use
Deadly Disorders in Psychiatric
New Drugs of Abuse
Difficult Behavioral Disorders
Excited Delirium
Pediatric Psychiatric Illness
Case Management in the Emergency
Intellectually and DD
Geropsychiatric Issues
Medication Update
Appropriate Treatments in the ED/PES
Agitation Tx Delirium and Dementia
New Treatments for Agitation
Successful Restraint Reduction
Who Can Go Home with Suicide
Dealing with Psychiatric Boards

Tentative Agenda (Day 2- Dec 12)

Reduction of Frequent Users
Working with EMS
Role of Community Mental Health
Nursing Issues of Caring for Behavioral
Emergencies
Mobile Care and Crisis Management
Training in Behavioral Emergencies
Medical Records in HIE
Legislative issues
Wall Time Collaborative
Models of Care
ED Tool Kit
Billing and Reimbursement
EMTALA
Scientific Session

Every registrant receives a
copy of the textbook



All Full Registrations Include a Copy
of Behavioral Emergencies for the
Emergency Physician

Pre-Conference Course on
Dec 10th Sponsored by IBHI
Improving Emergency Department
Care and Managing Throughput for
Behavioral Health Patients

CME Approved for ACEP Category 1
CEUs for RNs, PAs & SWs are
currently pending application.

Registration Fees \$545 in advance
\$645 at the conference.
Reduced fee for residents and students

Trena Burke, Conference Manager
Phone: 773-257-6589
E-mail: burtr@sinai.org

Invited Speakers

David Hnatow	Scott Zeller
Lisa Caoiccia	Rachel Glick
Kim Nordstrom	Eric Katz
Frank Lovecchio	Lara Chepenik
Lara Chepenik	Eddie Markul
Gary Vilke	Ken Thompson
Joanna Kowalik	Anne Maton
Sheri Richardt	Pablo Sadler
Jennifer Walthall	Kurt Isenberger
Seth Powsner	James Killeen
Jack Rozel	Richard McKeon
Jon Berlin	B Bartleson
Silavana Riggio	Junji Takeshita
Michael Wilson	Richard Wild

Course Director Leslie Zun, MD, MBA

Endorsements

Sinai Health System
The Chicago Medical School
**American Association for
Emergency Psychiatry**

www.behavioralemergencies.com

*This continuing nursing education activity is being awarded for 15 contact hours by Mount Sinai Health System (OH-401, 08/31/2015) an approved provider of continuing nursing education by the Ohio Nurses Association (OBN-001-91), an accredited approver by the American Nurses Credentialing Center's Commission on Accreditation



JOINT CONGRESS



MEDITERRANEAN
EMERGENCY MEDICINE CONGRESS

GREAT NETWORK
CONGRESS

FOCUS ON INNOVATIONS AND TRANSLATIONAL
RESEARCH IN EMERGENCY MEDICINE

SEPTEMBER 4-9, 2015 ROME, ITALY

The VIIIth MEMC is jointly organized by the American Academy of Emergency Medicine (AAEM), the Global Research on Acute Conditions Team (GREAT) Network & the Mediterranean Academy of Emergency Medicine (MAEM). In conjunction with the GREAT 2015 Annual Conference — organized by the GREAT Network.



Call for Papers
2015 *Academic Emergency Medicine* Consensus Conference

**Diagnostic Imaging in the Emergency Department:
A Research Agenda to Optimize Utilization**

The 2015 *Academic Emergency Medicine* (AEM) consensus conference, **Diagnostic imaging in the emergency department: A research agenda to optimize utilization** will be held on May 12, 2015, immediately preceding the SAEM Annual Meeting in San Diego, CA. Original papers on this topic, if accepted, will be published together with the conference proceedings in the December 2015 issue of *AEM*.

Diagnostic imaging is integral and beneficial to the practice of emergency medicine. Over the last several decades, emergency department (ED) diagnostic imaging has increased without a commensurate rise in identified pathology or improvement in patient-centered outcomes. Unnecessary imaging results in increased resource use and significant exposure risks. ED diagnostic imaging has become the focus of many stakeholders, including patients and various regulatory agencies. This multidisciplinary consensus conference represents the first coordinated effort to further our evidence-based knowledge of ED diagnostic imaging. This consensus conference will formulate the research priorities for emergency diagnostic imaging, initiate a collaborative dialogue between stakeholders, and align this research agenda with that of federal funding agencies.

Consensus Goal:

The overall mission of the 2015 *AEM* consensus conference will be to create a prioritized research agenda in emergency diagnostic imaging for the next decade and beyond. The consensus conference will feature expert keynote speakers, panel discussions including nationally recognized experts, and facilitated breakout group sessions to develop consensus on research agendas by topic. Optimizing diagnostic imaging in the ED is a timely topic that is relevant to all who practice emergency medicine. Furthermore, the conference content spans many other specialties (e.g. radiology, pediatrics, cardiology, surgery, internal medicine), all of which will be invited to participate in the conference to optimize the agenda and for future collaboration in order to improve emergency diagnostic imaging use.

Consensus Objectives:

1. Understand the current state of evidence regarding diagnostic imaging utilization in the ED and identify opportunities, limitations, and gaps in knowledge of previous study designs and methodology
2. Develop a consensus statement that emphasizes the priorities and opportunities for research in emergency diagnostic imaging that will result in practice changes, and the most effective methodologic approaches to emergency diagnostic imaging research
3. Explore and improve knowledge of specific funding mechanisms available to perform research in emergency diagnostic imaging

Accepted manuscripts will present original, high-quality research in emergency diagnostic imaging in areas such as clinical decision rules, shared decision making, knowledge translation, comparative effectiveness research, and multidisciplinary collaboration. They may include work in clinical/translational, health systems, policy, or basic sciences research. Papers will be considered for publication in the December 2015 issue of *AEM* if received by April 17, 2015. All submissions will undergo peer review and publication cannot be guaranteed.

For queries, please contact Jennifer R. Marin, MD, MSc (jennifer.marin@chp.edu) or Angela M. Mills, MD (millsa@uphs.upenn.edu) the 2015 consensus conference co-chairs. Information and updates will be regularly posted in *AEM*, the SAEM Newsletter, and the journal and SAEM websites.

CEP America's culture of caring puts the patient first. Outstanding collaboration and world-class practice support sets us apart.



“

Working for CEP America allows me to just take care of my patients, one-on-one. Patients come first.

”

—DOUG BROSINAN, MD

Emergency Medicine Partner, Sutter Roseville Medical Center

For information on a career with CEP America, visit us at
go.cep.com/collaboration

“

With CEP America I can stay true to my mission to provide patient-centered and compassionate care.

”

—ANNA GELBERG, MD

Hospitalist Partner, Palomar Medical Center



CEP
America®

Your Life. Your Career. Your Partnership.

SAVE THE DATE



CALIFORNIA ACEP
AMERICAN COLLEGE OF EMERGENCY PHYSICIANS

2015 Conferences

APRIL 21, 2015

LEGISLATIVE LEADERSHIP CONFERENCE // Sacramento

JUNE 12, 2015

ANNUAL ASSEMBLY // Los Angeles/Universal City

